



Education and Sport Development

Department of Education and Sport Development
Departement van Onderwys en Sportontwikkeling
Lefapha la Thuto le Tlhabololo ya Metshameko

NORTH WEST PROVINCE

NORTH WEST PROVINCIAL ASSESSMENT

JUNE 2016

TECHNOLOGY

MEMO

GRADE 8

SECTION A

Question 1

1.1 B✓

1.2 C✓

1.3 B✓

1.4 C✓

1.5 A✓

Question 2

2.1.1 False✓

2.1.2 True✓

2.1.3 True✓

2.1.4 False✓

2.1.5 True✓

Question 3

3.1.1 D✓

3.1.2 C✓

3.1.3 A✓

3.1.4 E✓

3.1.5 B✓

SECTION B

Question 4

4.1

They are more durable ✓

They are lighter ✓

They are cheaper than natural materials ✓

4.2

They are thrown away ✓

4.3

- A material is called **biodegradable** if natural processes can break the material into small harmless pieces. ✓✓
- Materials that cannot break down naturally into harmless substances are called **non-biodegradable** materials. ✓✓

4.4

Tins ✓

Papers ✓

Bottles ✓

4.5 Garbage bags or boxes ✓

Question 5

5.1

For example, if you put all your glass waste into a box, then that glass can be taken by a waste collector to a factory that makes new glass bottles out of old glass. ✓✓

5.2

a) Paper

It gets soggy and falls apart. ✓

b) Plastic

It gets wet, but nothing happens to it. ✓

c) Leather

It gets wet, and if not dried carefully, can get hard and unusable. ✓

5.3

- 5.3.1 It can block up water pipes. ✓ It can be swallowed by animals drinking it. ✓ It can trap other litter, causing streams to become polluted. ✓ It can pose health threats by creating stagnant pools that breed mosquitoes and other insects. The water quality will also deteriorate in these pools. ✓
- 5.3.2 It can choke the animal by blocking its windpipe, or the plastic bag can get stuck in the animal's throat and kill it slowly ✓ because it can't swallow food or water. If the animal manages to swallow the bag, the plastic can jam up its digestive system which could also kill it. ✓

5.4

- 5.4.1 The smoke is toxic (poisonous) ✓ and can cause serious health problems in people or animals who breathe in the smoke. ✓ These problems are sometimes immediate, and sometimes slow, but they will always result from breathing in the poison. ✓
- 5.4.2 Into the atmosphere, ✓ the heavy particles can combine with rain, causing **acid rain**, or can deposit on crops which then get eaten. ✓
- 5.4.3 The left over material that hasn't been destroyed by the fire, this is still toxic and will last for many hundreds of years. ✓✓

SECTION C**Question 6**

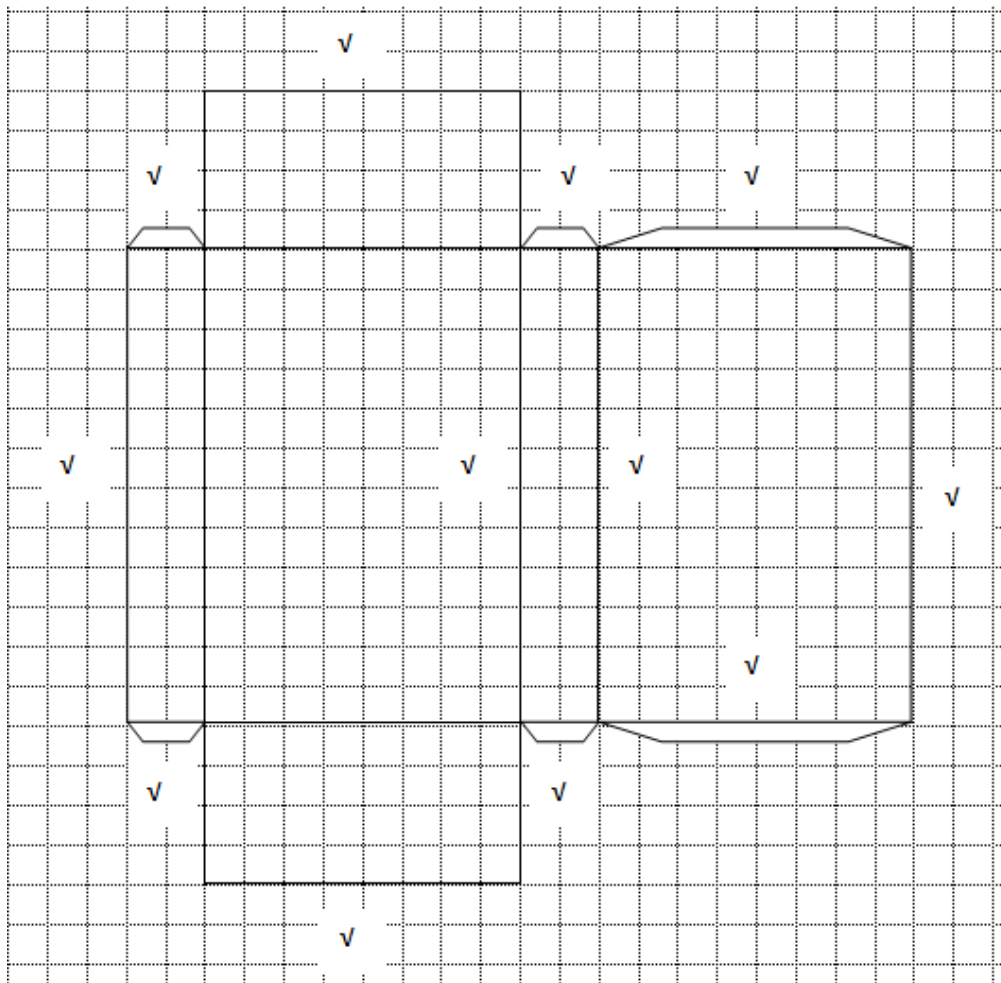
6.1

6.1.1 The box has six faces. ✓

6.1.2 The box has twelve edges. ✓

6.1.3 The box has eight corners. ✓

6.2 Look at the development of the box and use given measurements to re-draw it on the grids provided. 1 block = 5mm.



(12)